



GMT Constitutional Area 6, Group D

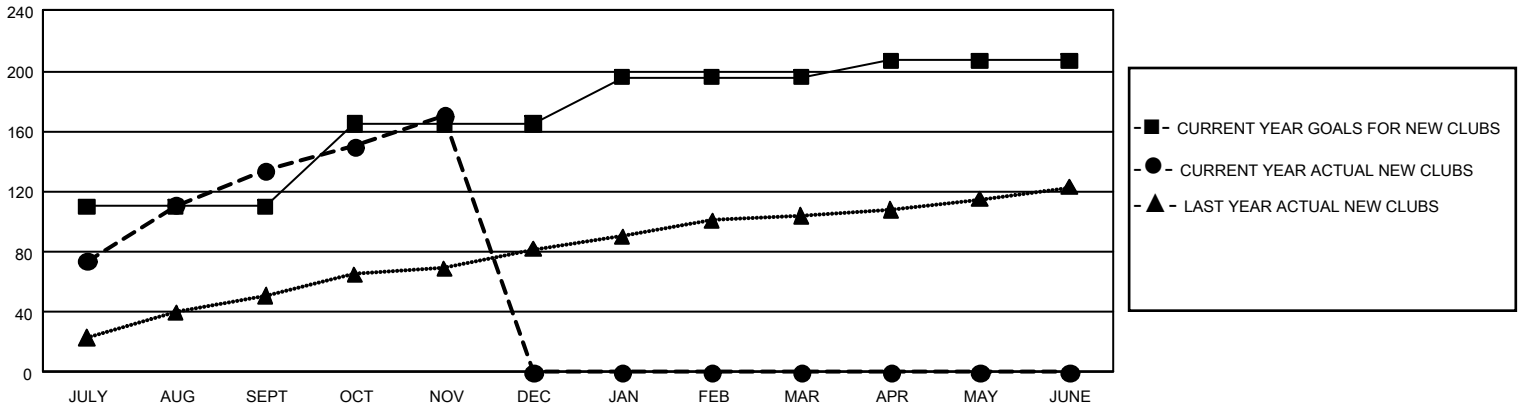
GMT: OPEN

REPORT DOES NOT INCLUDE CLUBS IN UNDISTRICTED AREAS.

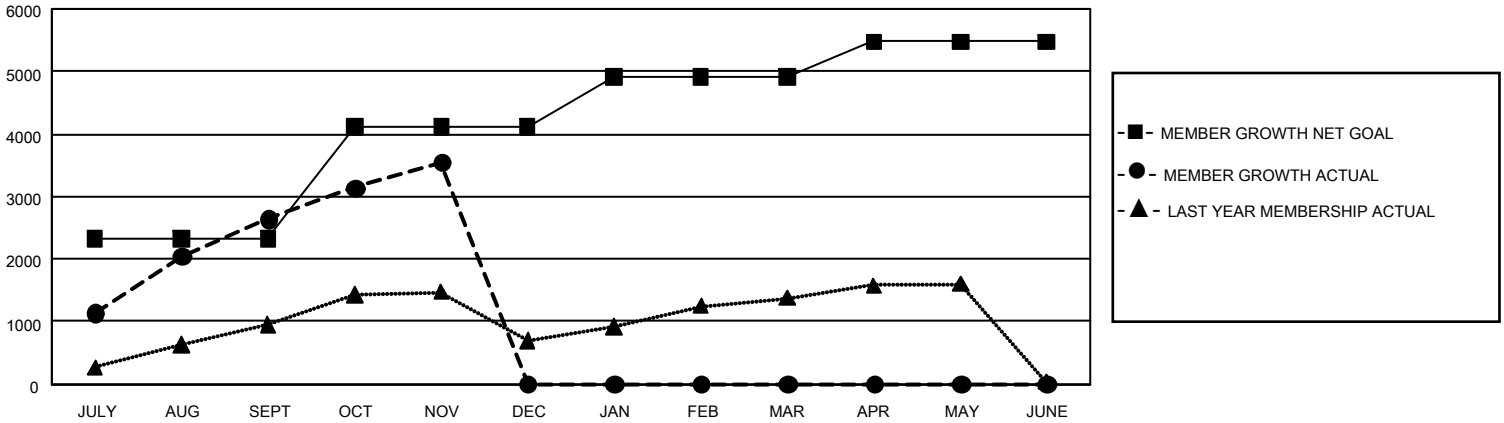
Clubs			
RESULTS FOR 2019-2020			
QUARTER	NEW CLUB GOAL	NEW CLUBS	DROPPED CLUBS
JULY/AUG/SEPT	330	134	3
OCT/NOV/DEC	165	36	2
JAN/FEB/MAR	93	0	0
APR/MAY/JUNE	33	0	0

Members			
RESULTS FOR 2019-2020			
QUARTER	MEMBER GROWTH NET GOAL	MEMBER GROWTH ACTUAL	DROPPED MEMBERS ACTUAL (including transfers)
JULY/AUG/SEPT	6,975	3,814	1,114
OCT/NOV/DEC	5,355	1,389	471
JAN/FEB/MAR	2,415	0	0
APR/MAY/JUNE	1,680	0	0

GOALS AND ACTUAL NEW CLUBS CUMULATIVE



GOALS AND ACTUAL MEMBERS CUMULATIVE



DROPPED CLUBS: 5	520 CLUBS OF 1,296 ADDED 1 OR MORE NEW MEMBERS	<u>GENDER DISTRIBUTION</u>	
<u>DROPPED MEMBERS</u>		MALE	24,806 (72.67%)
DECEASED	11	FEMALE	9,331 (27.33%)
CLUB CANCELLED	60	TOTAL FAMILY UNIT MEMBERS 19,522	
OTHER	1,514		
TOTAL	1,585		
CLICK HERE FOR CUMULATIVE MEMBERSHIP DATA			